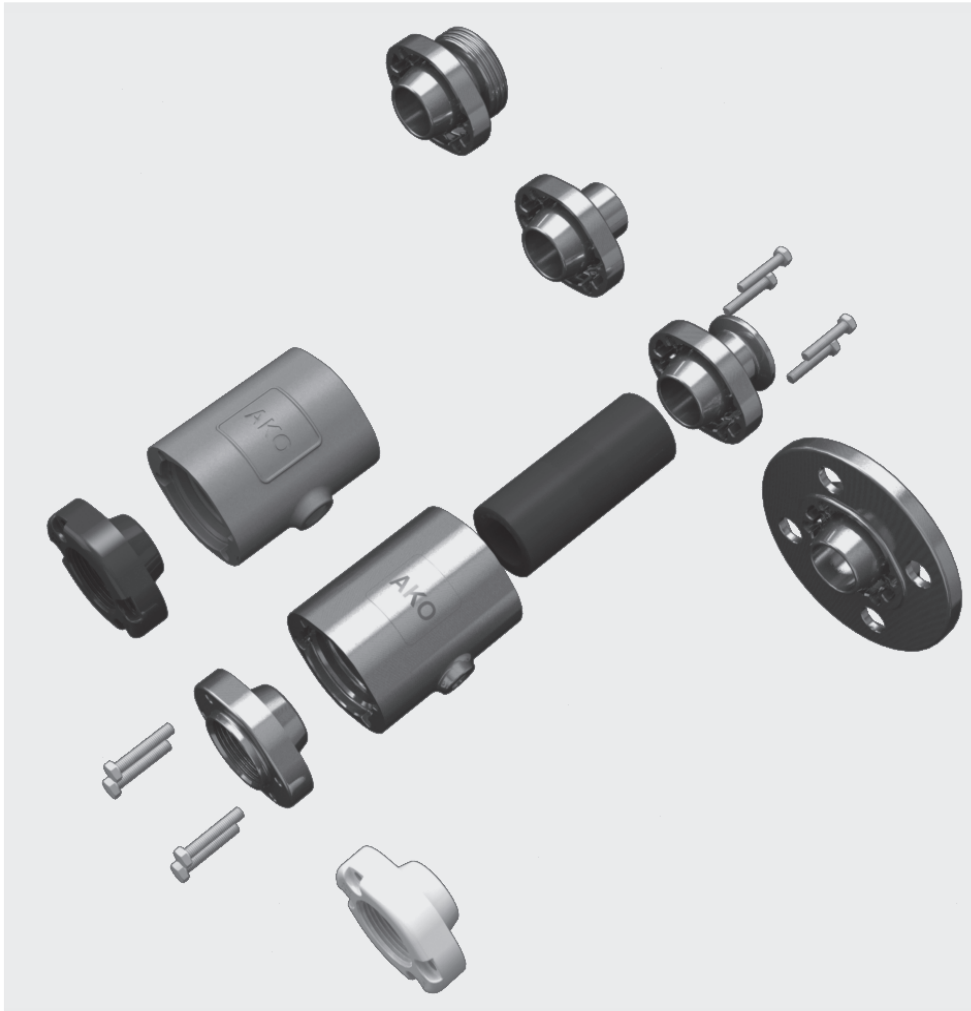


# New!

## 气动夹管阀 型号 VMC

## Air operated Pinch Valve type VMC



法兰 / Flange



内螺纹 / Internal Thread




卡箍连接 / Tri-Clamp



端焊接 / 端焊接 / Weld-on ends




螺纹接合管的 / Threaded spigot

 可灵活运用于防腐管道的,可拆卸的模块化系统!

用于控制和截止固体,悬浮液,糊状物,气体,纤维和粘性物质等几乎所有介质的理想解决方案。

### 优点:

- 灵活的模块化系统
- 多种连接可能性
- 结构紧凑
- 重量轻
- 通道流畅
- 无死角
- 易于维护和保养
- 零泄漏100%密封
- 成本低

 The flexible modular system for solvable and aseptic piping connections!

The ideal solution for isolation and regulation of solids of all kinds, suspensions, pastes, gaseous, fibrous and viscous media.

### Advantages:

- Flexible modular system
- Various connection options
- Extremely compact
- Light weight
- Complete free passage
- No dead spots
- Easy maintenance and re-sleeving
- 100% tight shut off
- Competitive

# 气动夹管阀 型号 VMC

## Air operated Pinch Valve type VMC

### 工业范围:

- 制药和食品工业
- 化工行业
- 气动输送系统
- 色素和颗粒物处理
- 陶瓷、玻璃和塑料工业
- 抽吸装置
- 配料系统
- 灌装和称重装置
- 排气和通风系统

### 多种防腐和无菌连接方式

### 连接的可能性:

法兰连接  
内螺纹连接 G / NPT 美标  
卡箍连接  
端焊接  
螺纹连接

可提供在危险防爆区域 1, 2, 21和22 使用的特殊电导接地装置。

**VMC系列气动夹管阀, 符合压力装置 97/23/EC 标准的所有指标。**

### 原料 / 材料:

壳体: 不锈钢 1.4408  
铝: AlSi10Mg  
塑料 POM  
连接端盖: 不锈钢 1.4404  
塑料 POM

### 衬套:

耐磨天然橡胶, 食品安全天然橡胶, 三元乙丙  
食品级三元乙丙, 丁晴橡胶 Nitril, 食品级丁晴橡胶, Hypalon, Butyl, 氯丁橡胶Neopren, 硅橡胶 Silikon, Viton, 其他材料请和我们洽询。

最大运行压力 (介质压力): ~ 6 bar  
阀门控制压力 (闭合压力): 8 bar  
压差: 2-3, 5 bar  
取决于公称通径和弹性体

### **Industrial areas:**

- Food/ pharmaceutical/ beverage industry
- Chemical industry
- Pneumatic conveying systems
- Pigments and granules
- Ceramics/ glass/ plastic industry
- Extraction systems
- Dosing systems
- Filling and weighing systems
- Air venting systems

### **Connections with various aseptic connections available!**

### Connection options:

Flange Connection  
Internal Thread Connection G / NPT  
Tri-Clamp  
Weld-on ends  
Threaded spigot (RJT Connection)

Special, conductive models with a separate earthing system, which are suitable for use in areas at risk of explosions (EX) in zones 1, 2, 21 and 22 are also available.

**The air operated Pinch Valves of VMC series fulfill all requirements of the Pressure Equipment Directive 97/23/EC.**

### Materials:

Body: Stainless steel 1.4408  
Aluminium AlSi10Mg  
Plastic POM  
Socket Connection: Stainless steel 1.4404  
Plastic POM

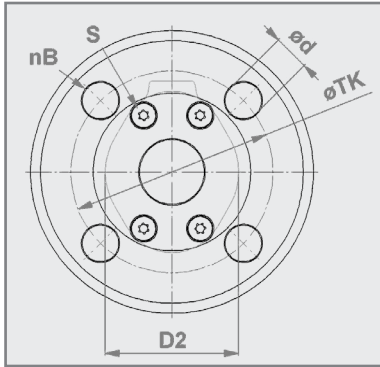
### Sleeves:

Natural rubber antiabrasive, Natural rubber food quality, EPDM, EPDM food quality, Nitrile, Nitrile food quality, Hypalon, Neoprene, Silicone, Viton, other materials on request.

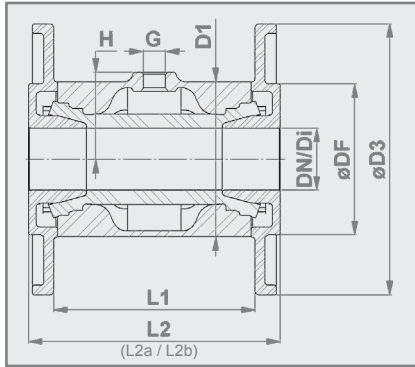
Operating / medium pressure max.: ~ 6 bar  
Control / closing pressure max.: 8 bar  
Differential pressure: 2-3.5 bar  
varies depending on diameter / sleeve

# 气动夹管阀 - 法兰连接

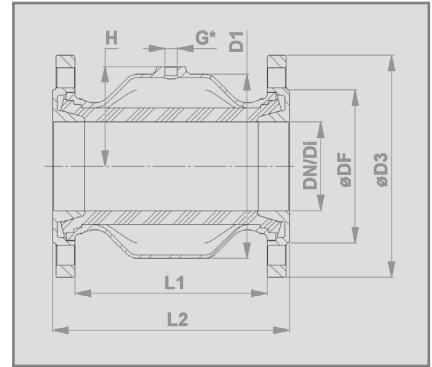
## Air operated Pinch Valve - Flange connection



DN25 - DN80



DN25 - DN50 \* DIN EN ISO 228 "G"



DN65 - DN80 \* DIN EN ISO 228 "G"

### 连接形式:

法兰连接,

按德标DIN EN 1092-1 PN 10/16

根据要求符合DIN11853-2 (L2a) / 11864-2 A型 (L2b)

### Connection type:

Flange connection according to

DIN EN 1092-1 PN 10/16

DIN 11853-2 (L2a) / 11864-2 form A (L2b) on request

### 壳体:

- 不锈钢 1.4408 (E)
- 铝合金 AlSi10Mg (A)

### Body:

- Stainless steel 1.4408 (E)
- Aluminium AlSi10Mg (A)

### 法兰:

- 不锈钢 1.4404 (E)

### Flange:

- Stainless steel 1.4404 (E)

### 阀门表面:

不锈钢: 电抛光 亚光

产品附件 = Ra 0,5.

依需求, 机械抛光光洁度可在 Ra 0.3

铝: 粉末涂层 60-80微米 RAL9006

### Valve finish:

Stainless steel: Electropolished matt

Wetted parts = Ra 0.5

Satin polished (brushed) Ra 0.3 on request.

Aluminium: Powder coated 60-80µm RAL 9006

DN / DI (mm)	D1 (mm)	D2 (mm)	ø D3 (mm)	ø DF (mm)	nB	ø d (mm)	ø TK (mm)	L1 (mm)	L2 (mm)	L2a (mm)	L2b (mm)	G (inch)	H (mm)	<sup>1</sup> S	<sup>2</sup> 容积 (l) (ca./approx.)	重量 (EE) (kg)	重量 (AE) (kg)
25	72	57	115	68	4	14	85	96	125	213	218	1/8"	36,5	4x(M6x35)	0,09	2,4	1,9
32	80	66	140	78	4	18	100	104	130	226	241	1/4"	45	8x(M6x35)	0,13	2,9	2,3
40	90	77	150	88	4	18	110	119	155	238	253	1/4"	50	8x(M6x35)	0,22	4,0	3,1
50	110	88	165	106	4	18	125	149	185	264	279	1/4"	60	8x(M6x35)	0,36	5,8	4,4
65	139	102	185	122	4	18	145	133	170	267	327	1/4"	73,5	8x(M10x20)	0,44	5,5	4,5
80	172	126	200	138	4	18	160	173	213	309	373	1/4"	90	8x(M10x20)	0,88	7,5	5,3

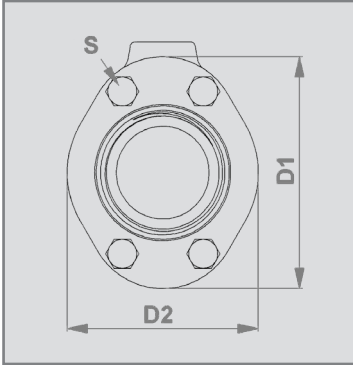
\* 孔数 / Number of holes

<sup>1</sup> 安装螺钉根据 DIN7985 (不锈钢 1.4401 / AISI 316) / mounting screws according to DIN 7985 (stainless steel 1.4401 / AISI 316)

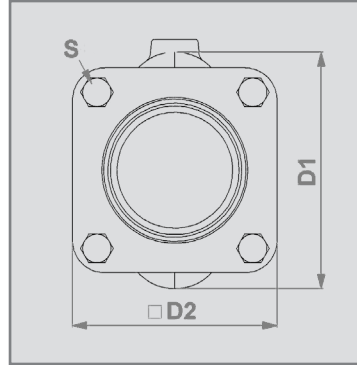
<sup>2</sup> 容积 = 衬套关闭时控制介质容积 / Volume = Control volume with closed sleeve

# 气动夹管阀 - 内螺纹连接

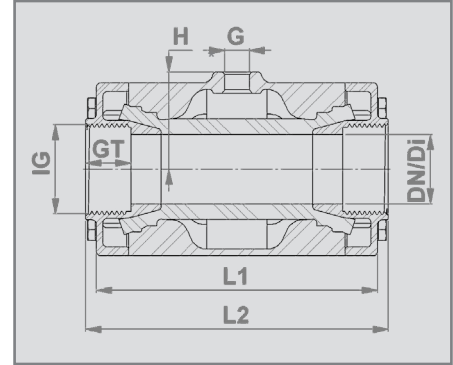
## Air operated Pinch Valve - Internal Thread connection



DN10 - DN50



DN65 - DN80



\* DIN EN ISO 228 "G"


### 连接形式:

带内螺纹连接的,  
按德标 DIN EN ISO 228 "G"  
或美标 ANSI/ASME B1.20.1 "NPT"


### Connection type:

Internal Thread Connection according to  
DIN EN ISO 228 "G" or  
ANSI/ASME B1.20.1 "NPT"


### 壳体:

- DN10-80: 不锈钢 1.4408 (E)
- DN20-80: 铝合金 AlSi10Mg (A)
- DN10-15: 聚甲醛 POM 天然色 (P)
- DN10-15: 聚甲醛 POM 导电 (P) 


### Body:

- DN 10-80: Stainless steel 1.4408 (E)
- DN 20-80: Aluminium AlSi10Mg (A)
- DN 10-15: Plastic POM (P) natural white
- DN 10-15: Plastic POM (P) conductive 

### 螺纹帽:

- DN10-80: 不锈钢 1.4404 (E)
- DN20-50: 聚甲醛 POM 天然色 (P), 医药/食品
- DN20-50: 聚甲醛 POM 导电 (P),  
危险及防爆区 

### (Internal Thread) Socket ends:

- DN 10-80: Stainless steel 1.4404 (E)
- DN 20-50: Plastic POM (P) natural white
- DN 20-50: Plastic POM (P) conductive  
for hazardous areas 

### 阀门表面:

不锈钢: 电抛光 亚光

### Valve finish:

Stainless steel: Electropolished matt

铝: 粉末涂层 60-80微米 RAL9006

Aluminium: Powder coated 60-80µm RAL 9006

DN / Di (mm)	D1 (mm)	D2 (mm)	IG (inch)	GT (mm)	L1 (mm)	L2 (mm)	G (inch)	H (mm)	'S	<sup>2</sup> 容积 (l) <sup>2</sup> vol. (l) (ca./approx)	重量 (kg) (EE)	重量 (kg) (AE)	重量 (kg) (AP)	重量 (kg) (PE)
10	46	35	G $\frac{3}{8}$ "	12	68	80	1/8"	23	4x(M6x16)	0,03	0,5	-	-	0,3
15	56	47	G $\frac{1}{2}$ "	15	85	95	1/8"	28	4x(M6x20)	0,05	0,8	-	-	0,4
20	62	49	G $\frac{3}{4}$ "	17	93	103	1/8"	31,5	4x(M6x25)	0,07	0,9	0,6	0,4	-
25	72	57	G1"	20	110	120	1/8"	36,5	4x(M6x30)	0,09	1,4	0,8	0,5	-
32	80	66	G1 $\frac{1}{4}$ "	21	130	140	1/4"	45	8x(M6x35)	0,13	1,8	1,2	0,9	-
40	90	77	G1 $\frac{1}{2}$ "	21	150	160	1/4"	50	8x(M6x35)	0,22	2,4	1,5	1,1	-
50	110	88	G2"	25	175	185	1/4"	60	8x(M6x35)	0,36	3,6	2,2	1,6	-
65	139	115	G2 $\frac{1}{2}$ "	30	173	200	1/4"	73,5	8x(M10x35)	0,44	3,7	3,0	-	-
80	172	133	G3"	33	213	230	1/4"	90	8x(M10x35)	0,88	5,5	4,4	-	-

<sup>1</sup> 安装螺钉根据 (不锈钢 1.4401 / AISI 316) DIN933 (EN24107) 标准 / mounting screws (stainless steel 1.4401 / AISI 316) according to DIN 933 (EN24107)

<sup>2</sup> 容积 = 衬套关闭时控制介质容积 / Volume = Control volume with closed sleeve

\* K为选择型号长度=150mm / Alternatively available is our K-variant → length = 150mm

保留技术更改的权利

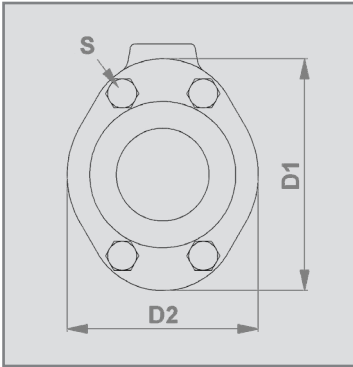
Technical details subject to change without notice.

### AKO Armaturen & Separations GmbH

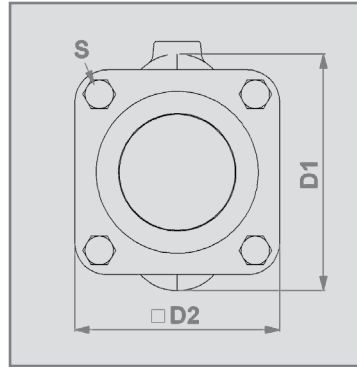
D-65468 Trebur-Astheim · Adam-Opel-Str. 5 · 电话: +49 (0)61 47 91 59-0 · 传真: +49 (0)61 47 91 59-59  
电子信箱: ako@ako-armaturen.de · 网站: www.jiaguanfa.cn

# 气动夹管阀 - 卡箍连接

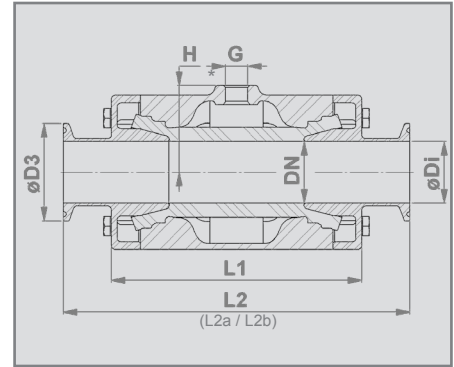
## Air operated Pinch Valve - Tri-Clamp connection



DN10 - DN50



DN65 - DN80



\* DIN EN ISO 228 "G"

### 连接形式:

以卡箍式连接的, 按德标DIN 32676


根据要求符合DIN11853-3 (L2a) / 11864-3 A型 (L2b)

### Connection type:


Tri-Clamp according to DIN 32676

DIN 11853-3 (L2a) / 11864-3 form A (L2b) on request

### 壳体:

- DN10-80: 不锈钢 1.4408 (E)
- DN20-80: 铝合金 AlSi10Mg (A)
- DN10-15: 聚甲醛 POM 天然色 (P)
- DN10-15: 聚甲醛 POM 导电 (P) 

### Body:

- DN 10-80: Stainless steel 1.4408 (E)
- DN 20-80: Aluminium AlSi10Mg (A)
- DN 10-15: Plastic POM (P) natural white
- DN 10-15: Plastic POM (P) conductive 

### 卡箍连接:

- DN10-80: 不锈钢 1.4404 (E)

### Tri-Clamp Connection:

- DN 10-80: Stainless steel 1.4404 (E)

### 阀门长度:

DN10: 按照DIN EN 558 标准, 27系列

DN15-50: 按照DIN EN 12982 标准, 1系列

DN65-80: 按照DIN EN 558 标准, 7系列

### Valve face to face length:

DN 10: Acc. to DIN EN 558 row 27

DN 15-50: Acc. to DIN EN 558 row 1

DN 65-80: Acc. to DIN EN 558 row 7

### 阀门表面:

不锈钢: 电抛光 亚光

产品附件 = Ra 0,5.

依需求, 机械抛光光洁度可在 Ra 0.3

### Valve finish:

Stainless steel: Electropolished matt

Wetted parts = Ra 0.5

Satin polished (brushed) Ra 0.3 on request.

铝: 粉末涂层 60-80微米 RAL9006

Aluminium: Powder coated 60-80µm RAL 9006

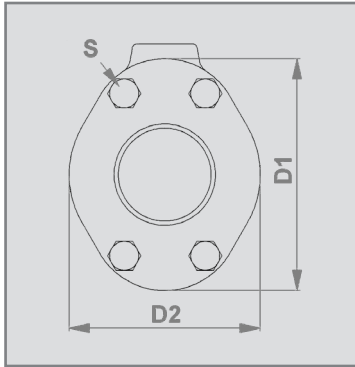
DN (mm)	ø Di (mm)	D1 (mm)	D2 (mm)	ø D3 (mm)	L1 (mm)	L2 (mm)	L2a (mm)	L2b (mm)	G (inch)	H (mm)	<sup>1</sup> S	<sup>2</sup> 容积 (l) <sup>2</sup> vol. (l) (ca./approx.)	重量weight (kg) (EE)	重量 weight (kg) (AE)	重量 weight (kg) (PE)
10	10	46	35	34	80	115	162	190	1/8"	23	4x(M6x16)	0,03	0,5	-	0,3
15	16	56	47	34	95	130	187	215	1/8"	28	4x(M6x20)	0,05	0,9	-	0,5
20	20	62	49	34	103	150	199	227	1/8"	31	4x(M6x25)	0,07	1,0	0,6	-
25	26	72	57	50,50	120	160	212	241	1/8"	36	4x(M6x30)	0,09	1,5	1,0	-
32	32	80	66	50,50	140	180	229	267	1/4"	45	8x(M6x35)	0,13	1,9	1,3	-
40	38	90	77	50,50	160	200	241	279	1/4"	50	8x(M6x35)	0,22	2,6	1,7	-
50	50	110	88	64	185	230	268	304	1/4"	60	8x(M6x35)	0,36	3,9	2,5	-
65	65	139	115	91	173	216	272	332	1/4"	73,5	8x(M10x35)	0,44	4,0	3,3	-
80	80	172	133	106	213	254	314	374	1/4"	90	8x(M10x35)	0,88	5,8	4,7	-

<sup>1</sup> 安装螺钉根据 (不锈钢 1.4401 / AISI 316) DIN933 (EN24107) 标准 / mounting screws (stainless steel 1.4401 / AISI 316) according to DIN 933 (EN24107)

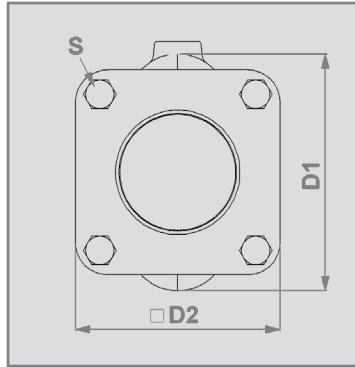
<sup>2</sup> 容积 = 衬套关闭时控制介质容积 / Volume = Control volume with closed sleeve

# 气动夹管阀 - 端焊接

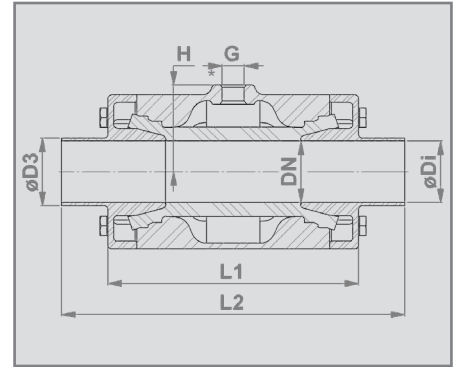
## Air operated Pinch Valve - Weld-on ends



DN10 - DN50



DN65 - DN80



\* DIN EN ISO 228 "G"


### 连接形式:

以焊接式连接的, 按德标DIN 11850 2 系列


### Connection type:

Weld-on ends according to DIN 11850 row 2

### 壳体:

- DN10-80: 不锈钢 1.4408 (E)
- DN20-80: 铝合金 AlSi10Mg (A)
- DN10-15: 聚甲醛 POM 天然色 (P)
- DN10-15: 聚甲醛 POM 导电 (P) 

### Body:

- DN 10-80: Stainless steel 1.4408 (E)
- DN 20-80: Aluminium AlSi10Mg (A)
- DN 10-15: Plastic POM (P) natural white
- DN 10-15: Plastic POM (P) conductive 

### 端焊接/端焊接:

- DN10-80: 不锈钢 1.4404 (E)

### Weld-on ends:

- DN 10-80: Stainless steel 1.4404 (E)

### 阀门长度:

DN10: 按照DIN EN 558 标准, 27系列  
 DN15-50: 按照DIN EN 12982 标准, 61系列  
 DN65-80: 按照DIN EN 558 标准, 7系列

### Valve face to face length:

DN 10: Acc. to DIN EN 558 row 27  
 DN 15-50: Acc. to DIN EN 12982 row 61  
 DN 65-80: Acc. to DIN EN 558 row 7

### 阀门表面:

不锈钢: 电抛光 亚光

产品附件 = Ra 0,5.

依需求, 机械抛光光洁度可在 Ra 0.3

### Valve finish:

Stainless steel: Electropolished matt

Wetted parts = Ra 0.5

Satin polished (brushed) Ra 0.3 on request.

铝: 粉末涂层 60-80微米 RAL9006

Aluminium: Powder coated 60-80µm RAL 9006

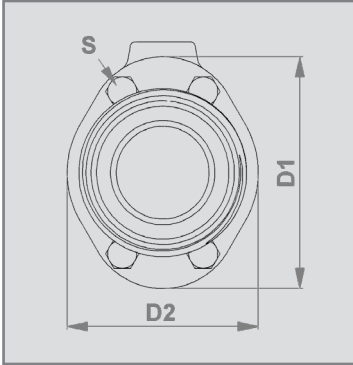
DN (mm)	ø Di (mm)	D1 (mm)	D2 (mm)	ø D3 (mm)	L1 (mm)	L2 (mm)	G (inch)	H (mm)	<sup>1</sup> S	<sup>2</sup> 容积 (l) (ca./approx.)	重量 (kg) (EE)	重量 (kg) (AE)	重量 (kg) (PE)
10	10	46	35	13x1,5	68	115	1/8"	23	4x(M6x16)	0,03	0,5	-	0,3
15	16	56	47	19x1,5	85	140	1/8"	28	4x(M6x20)	0,05	0,8	-	0,5
20	20	62	49	23x1,5	93	152	1/8"	31	4x(M6x25)	0,07	1,0	0,6	-
25	26	72	57	29x1,5	110	165	1/8"	36	4x(M6x30)	0,09	1,4	0,9	-
32	32	80	66	35x1,5	130	178	1/4"	45	8x(M6x35)	0,13	1,9	1,3	-
40	38	90	77	41x1,5	150	190	1/4"	50	8x(M6x35)	0,22	2,5	1,6	-
50	50	110	88	53x1,5	175	216	1/4"	60	8x(M6x35)	0,36	3,8	2,5	-
65	65	139	115	70x2	173	216	1/4"	73,5	8x(M10x35)	0,44	3,8	3,1	-
80	80	172	133	85x2	213	256	1/4"	90	8x(M10x35)	0,88	5,6	4,5	-

<sup>1</sup> 安装螺钉根据 (不锈钢 1.4401 / AISI 316) DIN933 (EN24107) 标准 / mounting screws (stainless steel 1.4401 / AISI 316) according to DIN 933 (EN24107)

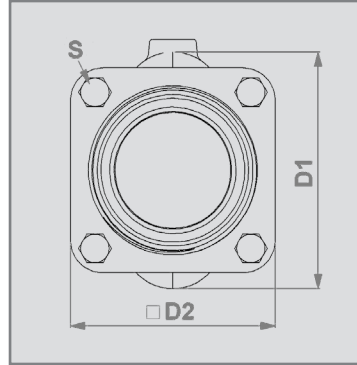
<sup>2</sup> 容积 = 衬套关闭时控制介质容积 / Volume = Control volume with closed sleeve

# 气动夹管阀 - 螺纹连接

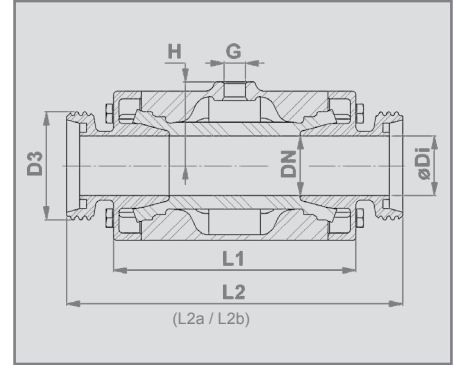
## Air operated Pinch Valve - Threaded spigot



DN10 - DN50



DN65 - DN80



\* DIN EN ISO 228 "G"

### 连接形式:

螺纹接口, 按德标DIN 11851


根据要求符合DIN11853-1 (L2a) / 11864-1 A型 (L2b)

### Connection type:


Threaded spigot according to DIN 11851

DIN 11853-1 (L2a) / 11864-1 form A (L2b) on request

### 壳体:

- DN10-80: 不锈钢 1.4408 (E)
- DN20-80: 铝合金 AlSi10Mg (A)
- DN10-15: 聚甲醛 POM 天然色 (P)
- DN10-15: 聚甲醛 POM 导电 (P) 

### Body:

- DN 10-80: Stainless steel 1.4408 (E)
- DN 20-80: Aluminium AlSi10Mg (A)
- DN 10-15: Plastic POM (P) natural white
- DN 10-15: Plastic POM (P) conductive 

### 螺纹接管管的:

- DN10-80: 不锈钢 1.4404 (E)

### Threaded spigot:

- DN 10-80: Stainless steel 1.4404 (E)

### 阀门长度:

DN 10: 按照DIN EN 558 标准, 27系列

DN 15-50: 按照DIN EN 558 标准, 1系列

### Valve face to face length:

DN 10: Acc. to DIN EN 558 row 27

DN 15-50: Acc. to DIN EN 558 row 1

### 阀门表面:

不锈钢: 电抛光 亚光

产品附件 = Ra 0,5.

依需求, 机械抛光光洁度可在 Ra 0.3

### Valve finish:

Stainless steel: Electropolished matt

Wetted parts = Ra 0.5

Satin polished (brushed) Ra 0.3 on request.

铝: 粉末涂层 60-80微米 RAL9006

Aluminium: Powder coated 60-80µm RAL 9006

DN (mm)	ø D1 (mm)	D1 (mm)	D2 (mm)	D3	G (inch)	H (mm)	L1 (mm)	L2 (mm)	L2a (mm)	L2b (mm)	<sup>1</sup> S	<sup>2</sup> 容积 (l) vol. (l) (ca./approx.)	重量 weight (kg) (EE)	重量 weight (kg) (AE)	重量 weight (kg) (PE)
10	10	46	35	Rd28x1/8"	1/8"	23	68	115	153	197	4x(M6x16)	0,03	0,5	-	0,3
15	16	56	47	Rd34x1/8"	1/8"	28	85	130	178	222	4x(M6x20)	0,05	0,9	-	0,5
20	20	62	49	Rd44x1/6"	1/8"	31	93	150	194	238	4x(M6x25)	0,07	1,1	0,8	-
25	26	72	57	Rd52x1/6"	1/8"	36	110	160	217	251	4x(M6x30)	0,09	1,6	1,1	-
32	32	80	66	Rd58x1/6"	1/4"	45	130	180	238	274	8x(M6x35)	0,13	2,1	1,5	-
40	38	90	77	Rd65x1/6"	1/4"	50	150	200	252	286	8x(M6x35)	0,22	2,8	1,9	-
50	50	110	88	Rd78x1/6"	1/4"	60	175	230	278	312	8x(M6x35)	0,36	4,2	2,9	-
65	65	139	115	Rd95x1/6"	1/4"	73,5	173	266	336	336	8x(M10x35)	0,44	4,5	3,8	-
80	80	172	133	Rd110x1/6"	1/4"	90	213	304	382	382	8x(M10x35)	0,88	6,7	5,6	-

<sup>1</sup> 安装螺钉根据 (不锈钢 1.4401 / AISI 316) DIN933 (EN24107) 标准 / mounting screws (stainless steel 1.4401 / AISI 316) according to DIN 933 (EN24107)

<sup>2</sup> 容积 = 衬套关闭时控制介质容积 / Volume = Control volume with closed sleeve